

Spring, 1984

*District Two Eighty One*

# *Festival*

*Mozart's*

**REGINA COELI**

*Faure's*

**REQUIEM**





P R O G R A M

DISTRICT 281 VOCAL AND ORCHESTRA FESTIVAL

Thursday, March 29, 1984

7:30 p.m.

Robbinsdale Cooper Senior High School Gymnasium

Dr. Dwayne Jorgenson  
University of Minnesota  
Guest Conductor

Robert Vickery  
Organist

THE COMBINED CHOIRS AND ORCHESTRAS OF  
ROBBINSDALE ARMSTRONG HIGH SCHOOL AND  
ROBBINSDALE COOPER HIGH SCHOOL

p r e s e n t

REGINA COELI

Wolfgang Amadeus Mozart

RAHS Soloists:  
Sue Johnson, Soprano  
Brenda Bauerly, Alto  
Jim Wentland, Tenor  
Jerry Upton, Bass

REQUIEM

Gabriel Faure

RCHS Soloists:  
Tony Fredericksen, Baritone  
Michelle Saumer, Soprano



## PROGRAM NOTES

### REGINA COELI

The Regina Coeli of Mozart was composed in 1779 in Salzburg and is one of several settings Mozart used for these words. As was his custom, he declaimed the Latin words with unusual skill. The prevalence of alleluias clearly marks this as a work of great joy and excitement. Its duration of performance is about eight minutes.

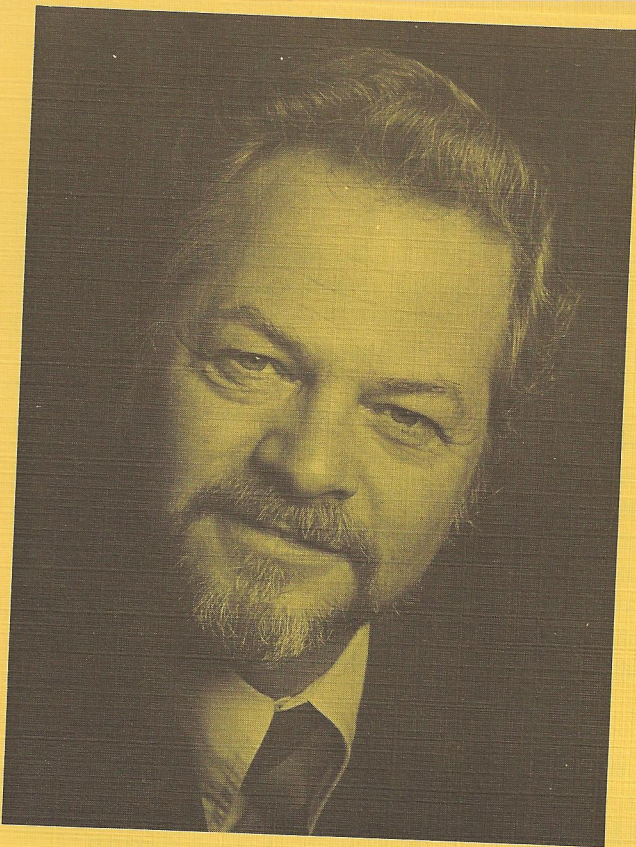
The Regina Coeli is an exuberant work requiring for authentic performance a four-part mixed chorus and four soloists, two violins, two oboes, two trumpets, tympani, bass (violincello and contrabass) and organ.

### REQUIEM

Faure's most often-performed work is probably his Requiem, Op. 48. If it is representative of his very personal style of composition, it is equally representative of a particular thread of French Catholic church music, a thread several centuries old, and one which has continued into our own times.

Faure composed his Requiem in 1886 when he was 41 years of age in memory of his father who died at Toulouse in 1885. The work was originally scored for a very small orchestra (a solo violin, violas, cellos, basses, a harp, three trombones, and organ). The later symphonic version was not made until 1899. Vocally the Requiem is scored for mixed chorus, sometimes in four, sometimes in six parts, baritone and soprano soloists.





#### THE CONDUCTOR

Dwayne Jorgenson, an associate professor of music at the University of Minnesota, is conductor of the Men's Chorus and the Symphonic Chorus.

His ensembles have appeared on numerous occasions with the Minnesota Orchestra and have sung under such notable guest conductors as Robert Shaw, Roger Wagner, Fruhbech DeBurgas and Klaus Tennstedt.

Since 1975 Dr. Jorgenson has been conductor of the Honors Music Program Choir in Minnesota and has done extensive work as a voice and choral clinician and guest conductor throughout the upper Mid-West, including the 1982 Tristate Festival in North Dakota and the Minnesota All-State Choir.

His most recent contribution to the field of vocal choral performance has been the development of an interdisciplinary colloquium on the use and care of the human voice.



Tonight's festival performance marks the 15th year of this endeavor in District 281 as well as the first performance of Mozart's Regina Coeli and the Requiem of Faure.

In 1970 directors of the Robbinsdale, Cooper, and Armstrong choirs and orchestras agreed to develop their own festival, patterned somewhat after the Lake Conference Vocal Festival of west suburban schools in Region 6AA with which they had been involved for a number of years.

A performance of this nature provides a most unique opportunity for students to learn, perform and appreciate major works of master composers. In addition, it affords the opportunity to work under and with various well-known conductors from our area.

Major works performed through the years include:

Messiah (three times)	Handel
Requiem (three times)	Brahms
Requiem (two times)	Mozart
Dona Nobis Pacem (two times)	Williams
Te Deum	Haydn

#### A C K N O W L E D G E M E N T S

Donna Jean Carter, Ph.D., Superintendent of Schools  
Elmer Kempainen, Principal, RCHS  
George Scarbrough, Director of Secondary Schools,  
Principal on Special Assignment  
Robert Mendenhall, District Music/Art Coordinator  
Mary Lindskog, District Coordinator of Communications  
and Public Relations  
Jim Giebenhain, Supervisor of Maintenance  
James French, RAHS Bands  
DuWayne Kloos, RAHS Bands  
Roger Thompson, RCHS Bands  
Donald Spangler, RCHS Bands  
Don Kvam, Artist